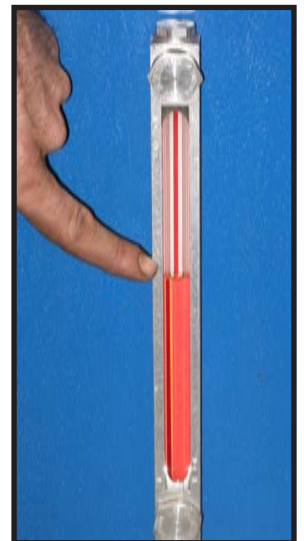




## Center Rock Inc. Rock Drill Oil Injection System

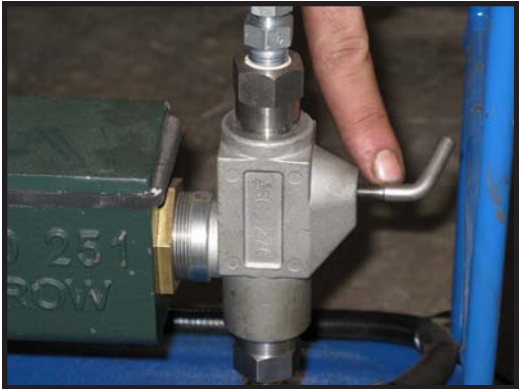


- Fill reservoir with Rock Drill Oil (7 Gal Capacity)
- During drilling operation periodically check sight gauge.
- Connect both hoses to drilling air supply. This can be anywhere in the air system, close to the compressors, or the drilling rig. One hose is for air supply to the oiler and the other carries the rock drill oil back to the air system.
- The hoses should be connected downstream from the main air shutoff valve. This way when the air is shut off the pump stops.



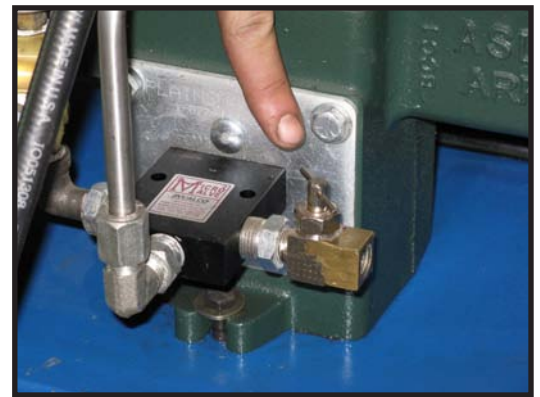
- Inlet air pressure! This cannot exceed 35 PSI. Adjust the pressure regulator accordingly.

- Pump is equipped with a priming port for initial start up and periodic check to see that oil is being injected. Open the port ½ turn while pump is cycling. Allow pump to cycle until oil appears.



- Adjust the volume the pump is injecting by opening or closing the exhaust valve. The more the valve is opened, the faster the pump cycles. Closing the valve slows the pump down.

- Rock Drill Oil injection rate for Down The Hole Hammer Drilling: ½ Gal. / 1,000 cfm./ drilling hour.



## Injection Rates vs Pump Speed

- For single air (1000 – 1600 cfm) pump should be set to cycle once every 5 seconds.
- For multiple air (2000 – 3000 cfm) pump should cycle once every 3 seconds.
- Large air volume (4000 – 6000 cfm) pump should cycle once every 1 ½ - 2 seconds.

Model # \_\_\_\_\_ Serial # \_\_\_\_\_

**Drill Faster. Run Harder. Work Smarter.**